

✉ sales@owenreilly.ie

📞 01 677 7100

owenreilly



45 Pearse Square, Dublin 2.
Three-bedroom period house with rear access. Asking price €1,100,000



110 Longwood Park, Rathfarnham, Dublin 14.
Four-bedroom house with south facing garden. Asking price €595,000



30 Mount Sandford, Milltown, Dublin 6.
Three-bedroom duplex with south facing terrace. Asking price €550,000



6 Northfield, Bloomfield House, Donnybrook, Dublin 4.
New, top floor, luxury two-bedroom apartment. Asking price €900,000



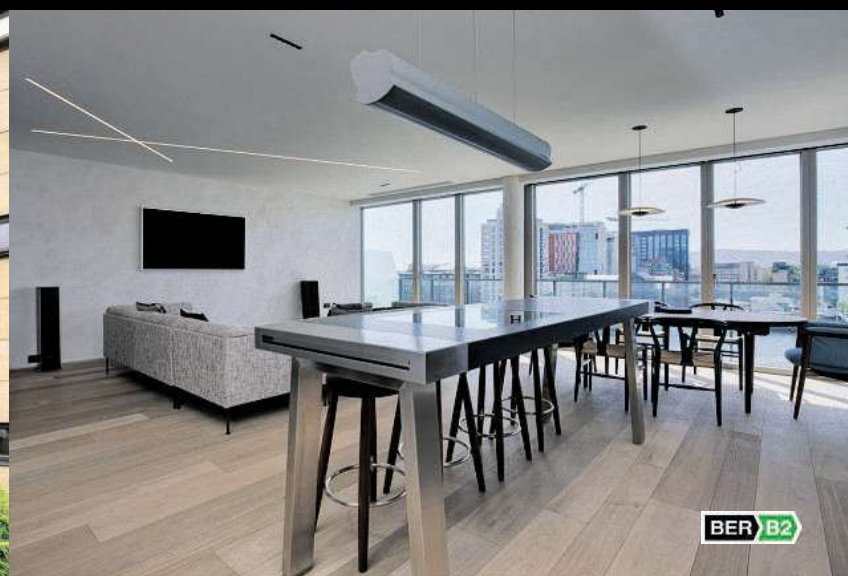
69 Earls Court, Reuben Street, Dublin 8.
11th & 12th floor three-bedroom penthouse. Asking price €495,000



22 Reuben Avenue, Rialto, Dublin 8.
Three-bedroom period house with attic space. Asking price €405,000



1 Maple Hall, Mount St. Anne's, Milltown, Dublin 6.
Two-bedroom apartment, with two parking spaces. Asking price €485,000



28 Hanover Dock, Grand Canal Dock, Dublin 2.
Completely renovated, three-bedroom penthouse. Asking price €1,700,000



38 Eblana Villas, Off Grand Canal Street Lower, Dublin 2.
Two-bedroom, three-bathroom townhouse. Asking price €390,000



25 West Road, East Wall, Dublin 3.
Renovated and extended three-bedroom house. Asking price €575,000



96 The Berkeley, Pembroke Square, Ballsbridge, Dublin 4.
Attractive two-bedroom apartment with parking. Asking price €400,000



16 Rothe Abbey Court, Kilmainham, Dublin 8.
3/4-bedroom house with south facing garden. Asking price €550,000



65/65A Hyde Square, South Circular Road, Kilmainham, Dublin 8.
Two-bedroom apartment with separate studio/office. Asking price €385,000



25 Hanover Riverside, Grand Canal Dock, Dublin 2.
Superb two-bedroom apartment with water views. Asking price €610,000



25 Southmede, Dundrum, Dublin 16.
Dual aspect, south facing, two-bedroom apartment. Asking price €450,000

View virtually and make offers @ owenreilly.ie

PSRA 002370